

## Wine Tasting & Auction Extravaganza!

With smiles and delightful expectations, over 350 guests at the YWCA's Wine Tasting & Auction were delectably seduced by fine wine, soulful music, fabulous silent and live auction items and sensational food!

Held October 19th at the Andover Country Club, **Len Wilson**, Merrimack Valley Regional President of our Presenting Sponsor, Sovereign Bank, served as Honorary Chair of this important fundraiser. Wine host, **Sam Messina** of Messina Liquors of North Andover, presented guests with lavish offerings that engaged and sparkled the palette.

Organized by the YWCA Board of Directors, this event raises funds to help underwrite all Women's and Youth Service programs. Executive Director **Rebecca A. Hall** was delighted with the turnout and energy of the evening. "We're fortunate to have so many loyal corporate and individual sponsors," she remarked. "Their support enables the YWCA to continue our work in the community."

Before the big event, Executive Director **Rebecca A. Hall** [L] and Board President, **Cynthia A. Cross** put some finishing touches on one of the auction items.



Let the fun begin!  
Guests enjoy the wine samplings!

See page 2 for a list of Sponsors.



02/03  
Donors,  
News & Notes

04  
Women's Services Youth Services

## Building the Future for Strong Women! *The Power of Partnerships*

Amazing things are happening at the YWCA in academic enhancement by bringing STEM [Science, Technology, Engineering & Math] focused programs to the members of our Girl's Center [ages 6 - 17]. Here, they have an opportunity to grow and explore options in six core competency areas: Academics, Leadership, Career Exploration, Health, Creativity and Family Unity.

Through a grant from the United Way of Massachusetts Bay & MV, a YWCA Regional agreement with Platform Shoes, the founders of Zoey's Room and a strong partnership with Esperanza Academy School of Hope, we have been able to provide an additional 4 Zoey's Room Computer Clubs at the Esperanza school to 42 girls. The clubs meet weekly for the entire school year. The progress of each participant is tracked and monitored as she navigates through various 'Tek Trecks'. These Trecks enable her to master computer skills, while exploring STEM topics and careers in various STEM-related fields.

Both **Laurie Bottinger**, Executive Director of Esperanza and **Lee Woodbury**, YWCA Deputy Director, are very excited about the power of these partnerships that have allowed this program to move forward. "It's terrific to have the capability to track each girl's progress, as it enables us to create a specific tutorial for any of her challenge areas," remarked Ms. Woodbury.

Additionally, through a grant from Verizon, the YWCA has added six new computers in the YWCA Girl's Center for program expansion. In total, 67 girls are participating in this exciting and educational program!



Above, YWCA Zoey's Room participants, **Elise and Abby**, do a 'Tek Trecks' held at Esperanza Academy.

06  
Wine Tasting  
Sponsors

07  
YWCA Fina  
House News

08  
Profile: **Liza Sanchez**

# Thank you Wine Tasting & Auction Sponsors!

*Our heart-felt and sincere thanks to our sponsors and supporters who include...*

## Presenting Sponsor:

Sovereign Bank

## Wine Table Sponsors:

Basilicato & Levesque  
Hinkley Allen Snyder, LLP  
IBMS  
Wheelabrator of North Andover

## Advocate Sponsor:

The Savings Bank

## Benefactor Sponsors:

Boston Private Bank & Trust  
Encore Staffing  
Enterprise Bank  
GL Family Health Center, Inc.  
Nancy Bender Insurance  
Polartec  
Joseph Sheehan, DDS  
U.S. Mechanical Company  
Yoplaic Columbo - Division of  
General Mills

## Ticket Host Sponsors:

Broadview Networks  
David Conole  
Margaret & Charles Crockett  
Doherty Insurance Agency  
Trish Gannon

## Patron Sponsors:

A Friend of the YWCA  
A. J. Sciuto DMD  
John & Wilma Breiland  
Carlson Wagonlit Travel  
Carolyn & Dan Collins  
Cynthia & Gary Cross  
B.R. Franz, DMD  
Mary Marengi  
StonehamBank - A Coop. Bank

## Supporting Sponsors:

Charles E. Beliveau, DDS  
Century Elevator  
Coastal Capital  
Amanda Cochrane  
Divine, Millimet & Branch  
First National Bank of Ipswich  
Fran's Gourmet Sassy Salsa, LLC  
Rebecca A. Hall  
Jackson Lumber & Millwork  
Messinger Chiropractic &  
Physical Therapy  
Moore Staffing  
Northfield Trust Mortgage  
Mary B. O'Brien  
Omni Security Systems

## Supporters, continued

Raymond Electric  
Re-Max, Deb Douglass  
Rabbi Goldstein, Temple Emanuel  
Wingate at Andover  
Jeffrey & Dawn-Marie Sutton  
Ortega Associates

## Friends & Donors:

A Friend of the YWCA  
A & K Fowler Insurance, LLC  
Amsam  
Ann Daly  
Dewhirst Funeral  
Jan Dik  
Yvonne La-Garde  
Melanson & Associates  
Alice Wimer

## Wine Donors:

Messina Liquors  
Classic Wines  
Gilbert Distributing Company  
Horison Beverages, Ideal Wine  
Masciarelli Wine Company  
Martignetti Companies  
Ruby Wines  
United Liquor

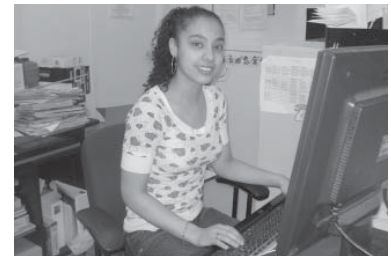
*continued on page 6.*

## Private, Community, State & Federal Grants

*Thanks and gratitude to the generous entities who help us make it happen!*

\$21,500 from The MA Executive Office of Public Safety and Security; Violence Against Women Act; the STOP Grant  
\$15,000 from TD Banknorth Charitable Foundation  
\$13,000 from Abbot & Dorothy H. Stevens Foundation  
\$10,000 from Charles E. Shannon Jr. Community Safety Initiative

*Right: Pavielle, one of the YWCA Girl's Center Leaders, enjoys one of the new computers provided us through the Verizon Grant*



*Donate on-line at [www.ywcalawrence.org](http://www.ywcalawrence.org)*

### YWCA Staff

**Rebecca A. Hall**  
*Executive Director*  
**Mary B. O'Brien**  
*Deputy Director*  
**Lee Woodbury**  
*Deputy Director*  
**Willie S. Day**  
*Finance Director*  
**Susan McNeff**  
*Director of Development &  
Public Relations*  
**Katie Zapert**  
*Director of Grant Development*  
**Kathy Dixon**  
*Human Resource Manager*

### YWCA Board of Directors

**Cynthia Cross**, *President*  
**Candace Martin**, *Vice President*  
**Linda Levesque**, *Treasurer*  
**Carolyn Collins**, *Secretary*  
  
**Amanda Cochrane**  
**Kara DiFruscia**  
**Jo-Anne Giuffrida**  
**Nancy Hargreaves-Pierce**  
**Ame Matuza**  
**Ana Medina-Martinez**  
**Christina Minicucci**  
**Patricia O'Brien**  
**Cathy Pierce**  
**Zora Warren**

YWCA Information  
YWCA of Greater Lawrence  
38 Lawrence Street  
Lawrence, MA 01840  
Phone: 978-687-0331  
TTY: 978-686-8840  
Fax: 978-689-4080  
[www.ywcalawrence.org](http://www.ywcalawrence.org)

Our Mission Statement  
*Strengthened by diversity, it is the mission of the YWCA to draw together members who strive to create opportunities for women's growth, leadership, and power in order to attain a common vision: peace, justice, freedom, and dignity for all people.*

# News & Notes

## A Thankful Fina House!

In their usual compassionate and giving tradition, **Melissa Maramma** and her colleagues of Borislow Insurance **Michelle Skafas**, **Amy Bilodeau** and **Colleen Nagri** organized and donated 26 turkeys and all the trimmings to residents of our YWCA Fina House enabling them to enjoy a beautiful and bountiful Thanksgiving dinner.

Our Housing Director, **Linda Comeau**, and Teen Living Program Director, **Kathy McCabe**, were astounded and grateful to them in making this donation possible. "We're incredibly fortunate to have the folks at Borislow give to our residents in such a caring way," said Ms. McCabe. On-hand for the delivery was **Cynthia A. Cross**, YWCA Board President who added, "Their generosity is simply marvelous."



*Pictured L to R are Kathy McCabe, YWCA Fina Resident Melissa; from Borislow - Amy Bilodeau, Colleen Nagri and Michelle Skafas; and YWCA Board of Directors President, Cynthia A. Cross.*

## Want to Make a Difference?

Make an in-kind donation of...

- \* Clothing - women's, children's [boys and girls!]
- \* Toiletries - toothpaste/brush, soap, deodorant, etc!
- \* Diapers - all sizes!
- \* Household - dishes, glasses, cutlery, pots & pans!
- \* Bed linen - twin size sheets, spreads, pillow cases!
- \* Books & Toys - for children age 2 to adult!

All donations should be clean and in good shape! Drop off M - TH between 9am - 2pm at 38 Lawrence St.,

## New Board Members!

The YWCA has accepted the nomination of the following members to the Board of Directors:

**Amanda Cochrane**, Home for Little Wanderers  
**Linda Levesque**, Basilicato & Levesque

*For information on becoming a Board Member, please contact Cynthia Cross at 978.687.0331 x1029.*

## Season of Hope

This past holiday season, the YWCA was overwhelmed with the generosity, good will and giving spirit of so many businesses, groups and individuals who donated toys, gifts and food to children of YWCA Youth programs and residents of YWCA Fina House. Our sincere thanks to...

<b>Cross Country</b>	<b>Empty Nesters</b>
<b>Granite City Electric</b>	<b>Infomedics</b>
<b>Mother's Connection</b>	<b>Native Sun</b>
<b>Northmark Bank</b>	<b>Philips Medical Systems</b>
<b>Ready, Set, Go!</b>	<b>Quota Inter'l of Andover</b>
<b>Toys for Tots</b>	<b>Michael Bellmore</b>

...for embodying the holiday spirit so graciously.



*Pictured with some of the donated toys and gifts are YWCA staff from both Women's and Youth Services, including L to R: Susan Staples, Christine DeMonoco, Liz Dube, Maricelis Ortiz, Ilean Carrillo, Maritza Gonzales, Vilma Lora, Minerva Grullon, and Martha Roman-Dumeng.*

## Entertaining Night Out Coming to Lawrence!

In conjunction with V-Day, engaging Lawrence native **Elizabeth Delgado** is bringing a production of the 'Vagina Monologues' to Bell Tower Square on March 21st and 22nd. Graciously, a portion of the ticket proceeds are being donated to the Domestic Violence Intervention, Prevention & Advocacy program at the YWCA.

Both **Vilma Lora**, our Director of Women's Services, and **Susan Staples**, our Director of Counseling & Community Education, are elated about the production coming to Lawrence and are delighted to be the recipients of the proceeds. "This production is a fabulous example of the complexity and power of women," Ms. Lora comments, and Ms. Staples adds, "It's both funny and sobering, and both men & women can enjoy it." **Tickets are \$7**. To make a reservation, email your full name, # of tickets and day of performance to [vdaylawrencetix@yahoo.com](mailto:vdaylawrencetix@yahoo.com) or call 978.397.5851.

# Spotlight on Women's Services

## YWCA's Commitment to Breast Cancer Prevention Continues Through Boston's Mammography Van

The YWCA of Greater Lawrence continues its commitment to the community by bringing Boston's Mammography Van, courtesy of Mayor Thomas Menino, to medically under-served women in the Lawrence community.

Funded by the remarkable philanthropist **Cynthia Mohr**, YWCA staff members **Vilma Lora**, Women's Services Director and **Minerva Grullon**, Women's Services Coordinator, work in partnership with the Dana Farber Cancer Institute, the Lawrence Mayor's Health Task Force [MHTF], the American Cancer Society, Harvard School of Public Health, MassCONNECT, and ACS, to bring the Van to Lawrence. In 2007, there were three screening days, with impressive results. In total...

- \* 121 local women 40 and over received mammograms
- \* 34 of these women had their first, baseline mammogram
- \* 67 of these women were uninsured, and 54 partially insured *continued below*

## Celebrating Women's Safety & Wellness!

On October 17, the YWCA held a special event at the Lawrence Senior Center to celebrate women's lives by raising awareness around safety, beauty and wellness through beauty enhancing, relaxation, fitness and educational activities.

Supported by service donations from MHTF members and Lawrence General Hospital, women enjoyed massages, make-overs, rousing fitness routines and educational information presented by sponsors and the staff of the YWCA's Women's Services.

"Fun, upbeat and informative," shouted Maria, one of the fitness participants. "I'd come again!"

## RAISING AWARENESS ON DOMESTIC VIOLENCE

Throughout October - Domestic Violence Awareness Month - the YWCA hosted and participated in several events to help the community recognize, intervene and prevent violence against women, children and men. Events included:

- \* *The Clothesline Project*: A hand-crafted T-shirt display at NECC created by DV survivors & families;
- \* *DV Reach-Out*: staff-hosted display tables at the YWCA, Lawrence City Hall and NECC;
- \* *'March of the Brides'*: Community walk in mourning the victims of DV.
- \* Roll calls at police departments in Lawrence, Methuen & N. Andover for women murdered by DV acts.

## Old Cell Phone? Donate - Don't Discard!

We participate in a cell phone recycling program that funds our Women's Service programs. Donate your old cell phone at one of our donor locations:

- In Lawrence:
  - Grand Wireless
  - Paul Mitchell Salon
  - Store 24
  - Unik Wireless
  - YWCA
- In Andover:
  - Andover Animal Hospital
  - Royal Jewelers
  - Verizon Wireless
- In North Andover:
  - Curves
- In Haverhill:
  - Pilgram Lane Arcade

Thanks to all of our drop off locations and to the following businesses for organizing drop offs!

- Alcatel-Lucent
- Caritas Holy Family Hosp.
- District Attorney's Office
- Lawrence Court
- Philips Medical Systems
- Wyeth

Host a cell-phone drive where you work - call 978.687.0331 x1032!

*continued from above...*

"I'm so absolutely delighted and honored to be able to work with the terrific folks from both the YWCA and Dana Farber to bring this service to the women of Lawrence. It's so needed," explained Ms. Mohr.

This year, the YWCA is bringing the Van back to Lawrence twice more. Scheduled dates include:

- Saturday, 3/1 at the YWCA, Lawrence
- Saturday, 5/3 at the YWCA, Lawrence

For more information, call Ms. Grullon at 978.687.0331 x1048 or email [mgrullon@ywcalawrence.org](mailto:mgrullon@ywcalawrence.org).



Cynthia Mohr [left] with staff members of the Women's Health Department including Maria Alvarces, Vilma Lora and Minerva Grullon. Center is Deputy Director Mary B. O'Brien

# Spotlight on Youth Services

## Focus on Child Literacy

Improving child literacy rates is one of the goals of **Liz Dube**, Director of Early Childhood Education, and her staff to help give each child a solid foundation on which to build academic and personal excellence.

To help accomplish this, Ms. Dube and staff assess each child's literacy twice yearly, and have now put in place an updated assessment program called *Creative Curriculum Developmental Continuum*.

The goal of the program is to measure the cognitive, literacy, social, emotional and physical development of each of the 95 children enrolled in the Learning Center. This is a computer based, on-line program which enables children to have fun while learning, as staff use the matrices to chart each child's progress. Staff can measure progress for each child in each discipline area in a variety of ways including daily, weekly, monthly, quarterly, semi-annually and annually. "This gives us an opportunity to plan either enrichment or remedial activities for a child based on individual needs," explains Ms. Dube. "It's remarkable seeing the progress the children make while having fun too!" Ms. Dube adds.

Funding for this program is made possible through donations, Community Partnership and the Commonwealth of Massachusetts. Once the program has been utilized for 12 full months, the YWCA will be eligible for additional state funding.



Four-year-old Josua looks over the shoulder of four-year-old Brianna as she navigates through the Breakthrough to Literacy program, part of the Early Childhood's focus on improving the literacy rate of small and school age children.

## Power of Zoey's Room!

Zoey's Room is a national, on-line social networking community that encourages girls ages 10 to 14 to expand their knowledge of STEM [science, technology, engineering and math]— all in a monitored environment. By going on 'Trek Trecks' the girls earn points as their knowledge increases in each area. While the site offers many social aspects appealing to girls, the YWCA focuses on the 'STEM Trecks' with girls who are members of our Zoey's Room Club. By successfully completing each 'Treck', girls earn points, which may be redeemed directly through Zoey's Room.



Zoey's Room Computer Teacher, Dianne Fields [c], helps two YWCA girls work on their 'Tek Treck' assignment at the Experanza Academy location.

## YWCA Fundraiser!

**Flowers by Elena** is helping the YWCA Youth Services Program with a creative fundraising campaign. Purchase flowers by phone or in person, mention the YWCA, and receive a 5% discount! Flowers by Elena will donate 10% of the purchase price to the YWCA. We all benefit! So for all your floral needs - and to help the YWCA - visit:

### Flowers by Elena

95 Broadway [Rt 28]  
Methuen, MA  
978.683.4482

#### Contact:

Alfredo Garcia at 978.683.4482 or via email at [alfredo@univision.com](mailto:alfredo@univision.com)

## Camp Y Wood - Enroll Now for Summer Fun!

SWIMMING • BOATING • FISHING • ARTS & CRAFTS • GAMES • SPORTS



### CAMP Y-WOOD

*Located on Captain's Pond in Salem, New Hampshire*

This beautiful, sprawling, 20-acre camp has a sandy beach, open fields, wooded areas and a pavilion. With plenty of room to spread out, your camper will enjoy adventurous and fun-filled days - all supervised by our fully trained staff!



# Donors to our Wine Tasting & Auction!

We gratefully thank our generous auction donors who include...

## Live Auction Donors:

Absolute Music: 4 Guys in Tuxes  
Andover Country Club  
Carol Bateson  
Paula & Jim Britt  
Carriage House  
Caterstaff  
Margaret Crockett  
Dinner by Dish  
Intimate Dining Experience  
Lowell Five Cent Savings Bank  
Candace Martin  
Susana McNeff  
Messinger Chiropractic &  
Physical Therapy  
Christina Minicucci & Eric Loth  
TD Banknorth  
Unique Perspectives  
YWCA Board of Directors

## Silent Auction Donors:

30 Park Hair Salon  
A Friend of the YWCA  
Arbonne International  
Athlete's Corner  
ATA Martial Arts  
Maria Bartlett  
Kathleen Beaulieu  
Bella Beads  
Boston Red Sox  
Coco Collection  
Culinary Concepts  
Cupcake Boutique  
Daher's Shoes  
Sandy DaSilva - Mary Kay Consult.  
Dellaria  
Christine Doherty  
Bruce Dove  
Dress Code  
Ed Pedi Photography

## Silent Auction Donors, continued:

Elizabeth Gracy  
Ethan Allen  
First Health of Andover  
Flowers by Steve  
Fran's Sassy Salsa, LLC  
Eric Frothingham  
Rev. Kristen Frothingham  
Gerald Walker IT Consulting  
Linda T. Hanson  
Hawthorne Hotel  
Helen Thomas Store  
Holiday Inn Tewksbury/Andover  
Holland Flower Shoppe  
Eileen Holzman  
Homa's Skin Care  
Horizon's Edge  
Huntington Theater  
Inn Street Barber Shop  
Ironstone Farm/Challeng Unlimited  
JTE Realty  
Les Fleurs  
Lewis Motors  
Main Street Salon  
Margot's Gallery  
Maria Fontaine Designs  
Massage Only  
Maternal Health & Fitness  
Mawby's  
Susana McNeff  
MV Chamber of Commerce  
MV Philharmonic Society  
New England Civic Ballet  
North Shore Music Theatre  
Salon Navid  
Patricia O'Brien  
Peabody Essex Museum  
Polartec  
Positive Images Gallery 61  
Quiet Pleasures

## Silent Auction Donors, continued:

Ricky's Candy, Cones & Chaos  
Roger's Center for the Arts  
Rose & Dove  
The Savings Bank  
Eli Scott Stylist  
Kathy Skala  
Smolak Farms  
Sovereign Bank  
Stoneham Theater  
Studio @ 13  
Talbots  
The Party Connection  
Tiny Tunes  
Treble Chorus of New England  
V & V Nails  
Scott Wheeler  
Ned Williams, Artist  
Wine Sense

## Raffle & Other Donors:

A Friend of the YWCA  
Bank North  
Black Mountain  
Bruckmann's Lawn & Garden  
The Butterfly Place  
Crocheted Mountain  
Girlfriends Gifts  
Imajine  
Institute of Contemporary Art  
Isle of Shoals Steamship  
J & J Nails  
Museum of Fine Arts  
Museum of Science  
New England Aquarium  
New England Quilt Museum  
Old Sturbridge Village  
Preservation Society of Newport  
Showcase Cinemas  
Yankee Whale Watch

## Save the Date: Tribute to Women, May 15th!

**Senator Susan Tucker** will be Emcee for the YWCA's 25th Jubilee Celebration, Tribute to Women annual luncheon. All proceeds help underwrite both Women's and Children's Services.



2008 marks the YWCA's 25th Jubilee Celebration of our Annual *Tribute to Women* luncheon, honoring the professional and community contributions of Merrimack Valley women leaders.

This sell-out event, with **Senator Susan Tucker** as Emcee, raises awareness about and resources for all YWCA Women's and Youth Service programs. This year, the celebration will be on Thursday, May 15th at the stylish Andover Country Club.

For more information - or to learn how you can make a nomination - please visit our website at [www.ywcalawrence.org](http://www.ywcalawrence.org).

## Soup's On!

Armed with chicken, broccoli, spices and other kitchen equipment, **Robert Andrews** - owner of Intimate Dining Experience - recently gave a hands-on cooking demonstration to the residents at YWCA Fina House.

The theme of the evening was *Three Meals from One Chicken!*, where Mr. Andrews prepared Roasted Chicken and Vegetables, Spicy Chicken & Rice over Broccoli and Chicken, Grape & Raisin Salad. Both residents and staff enjoyed the wonderful presentation and especially delighted in eating the scrumptious results!



"Robert has a very engaging and easy-going presentation style which worked really well with our residents," commented **Linda Comeau**, Director of Housing. "I love cooking and welcome any chance to show how enjoyable it can be; this was really great tonight," said Mr. Andrews. The residents and staff hope for a repeat performance in 2008!

## Make-Over Magic for YWCA Fina Residents!

Giving to the community comes naturally for **Sandy DaSilva** - Mary Kay Consultant. After learning about YWCA Fina House's residential programs which offer hope to women who are survivors of domestic violence, sexual abuse and homeless teen mothers, she gave residents a demonstration on skin care.

"I really enjoyed the evening and bonded with several of the women; it was great providing them with a little insight and pampering," remarked Ms. DaSilva.

Ms. DaSilva's presentation is part of an on-going YWCA Fina House project to have business and community volunteers present residents with information on a variety of topics including resume workshops, personal growth and personal care.

## Please Consider a Donation!

Please use this form to send in a donation to the YWCA. Your support helps us provide services for at risk children and youth, domestic violence and rape crisis survivors, transitional housing initiatives and women's health screening services for breast and cervical cancer and diabetes.

Enclosed is my tax-deductible gift made out to the YWCA of Greater Lawrence:

Payment  Check  Credit Card # \_\_\_\_\_ Exp. date \_\_\_\_ / \_\_\_\_

\$1000  \$500  \$250  \$100  \$50  Other \$ \_\_\_\_\_

Name: \_\_\_\_\_ Company: \_\_\_\_\_

Address: \_\_\_\_\_

City: \_\_\_\_\_ State: \_\_\_\_\_ Zip: \_\_\_\_\_

My gift is in memory of \_\_\_\_\_ (name)

My gift is in honor of \_\_\_\_\_ (name) as a celebration of

Birthday  Anniversary  Graduation  other: \_\_\_\_\_

please send a card to:

Name: \_\_\_\_\_

Address: \_\_\_\_\_

City: \_\_\_\_\_ State: \_\_\_\_\_ Zip: \_\_\_\_\_

07

Mail to YWCA of Greater Lawrence, 38 Lawrence St. Lawrence, MA 01840.

# A Star Rising at YWCA: Liza Sanchez

Smart, witty, charismatic and charming, volunteer-turned-staff member **Liza Sanchez** came to the YWCA of Greater Lawrence two years ago to work in our Women's Services and YWCA Fina House programs under the tutelage of our Director of Women's Services, **Vilma Lora**.

The eldest of three girls, Ms. Sanchez spent her first 12 years in Manhattan, then moved with her mother and two sisters to Lawrence. "Culture shock," Liza explains, was her first reaction to the move. "I so love the high energy of New York City, though came to enjoy Lawrence quickly," she adds.

Excelling academically in math and science, Liza was influenced by encouraging teachers at Presentation of Mary Academy, where she became involved in many community projects at Lazarus House, Walk for Hunger and then the YWCA. "During high school, I became really aware of local community issues and wanted to get involved; that's how I chose to volunteer at the YW. They help people change their lives," reflects Liza.

Currently a student at Merrimack College in N. Andover, Liza returned this past December from a five-month Army Basic Training program, graduating with an MP Badge. Liza now works part-time at the YWCA, helping to fund her college education where she is seeking a degree in either criminal justice or health sciences.

Serving as a role model to sisters Yvonne [18] and Alexandra [15], Liza embodies the YWCA spirit of hope. "I love working at the YW and challenging myself and others to succeed."



NONPROFIT ORG  
US POSTAGE  
PAID  
PERMIT 19  
LAWRENCE, MA

ADDRESS CORRECTION REQUESTED

YWCA Greater Lawrence  
38 Lawrence Street  
Lawrence, MA 01840  
Pace, justice, freedom and dignity for all people

**YWCA**  
empowering women  
eliminating racism